

Welcome Chef Ralf Spodzieja2
 Recipe.....2
 New Golf Superintendent ..3
 Golf Calendar of Events.....3
 Men's Golf4
 Ladies' Golf5
 Real Estate6, 7
 Golf Shop8

Introducing a Newsletter for the Crown Isle Community

Please enjoy the premier issue of Crown Isle News Update. It's full of information about what's happening at Crown Isle Resort and Golf Community and gives details on future events and promotions. In each issue you will find updates from our Golf Department, Real Estate – including a feature home, news on upcoming projects, a Calendar of Events, and a recipe of the month

In this issue we introduce new staff members including Chef Ralf Spodzieja and Superintendent Mike Kearns. Chef Spodzieja's commitment to quality and sophisticated presentation makes his Pacific Northwest cuisine much sought after. Superintendent Mike Kearns comes to Crown Isle from the Chester Golf Club just outside of Halifax, Nova Scotia and brings with him a wealth of knowledge that has taken him from coast to coast.

We hope you find this newsletter interesting and informative. If you have any comments about this issue or if you have ideas for future articles, please contact Janette Sproston at 703-5050.



INSIDE

Feature Home



ENCHANTING EXECUTIVE

Golf course home blends traditional styling with modern art-deco design. This spacious two-bedroom and den, no step rancher also offers the opportunity of a completely self contained in-law suite, or a personal business suite for the home based professional. Some of the extraordinary features include full grain walnut floors, custom built in cabinetry, luxury ensuite with heated porcelain tile flooring, two gas fireplaces, designer decorated, custom window treatments, enclosed courtyard with water feature and even a special spot to conveniently park your golf cart. Simply a delight to come home to. For more information, contact Errol Winter at 250-703-5057.



Welcome to Chef Ralf Spodzieja

The Management at Crown Isle Resort and Golf Community is pleased to announce the appointment of Ralf Spodzieja to the position of Executive Chef. Born in wine country on the border of Alsace and France, Ralf worked with his Grandfather, a Hotel Chef in that region, since he was 15. Ralf and his family relocated to Canada in 1982.

Ralf has extensive and varied experience and has owned and operated his own restaurants for six years. He was the Chef de Cuisine at the Il Paradiso in Vancouver which tied for best Metropolitan Restaurant with Lumiere and he has worked in the Calgary and Rocky Mountain areas for eight years, including a five-year term at CP Hotel. Ralf was the Opening Dining Room Chef at the Fantasy Land Hotel at the West Edmonton Mall and was the Executive Chef at Painters Lodge before joining our team at Crown Isle. Ralf has the distinction of winning Gold and Bronze Medals in cooking competitions in Alberta.

Ralf moved to the Comox Valley to take advantage of the fresh, local ingredients to enhance his current and future menu options. His commitment to quality, his minimalist approach and sophisticated presentation makes his cuisine sought after. Crown Isle Resort and Golf Community is excited to have such a dedicated professional as part of our team. Please join us in welcoming him.

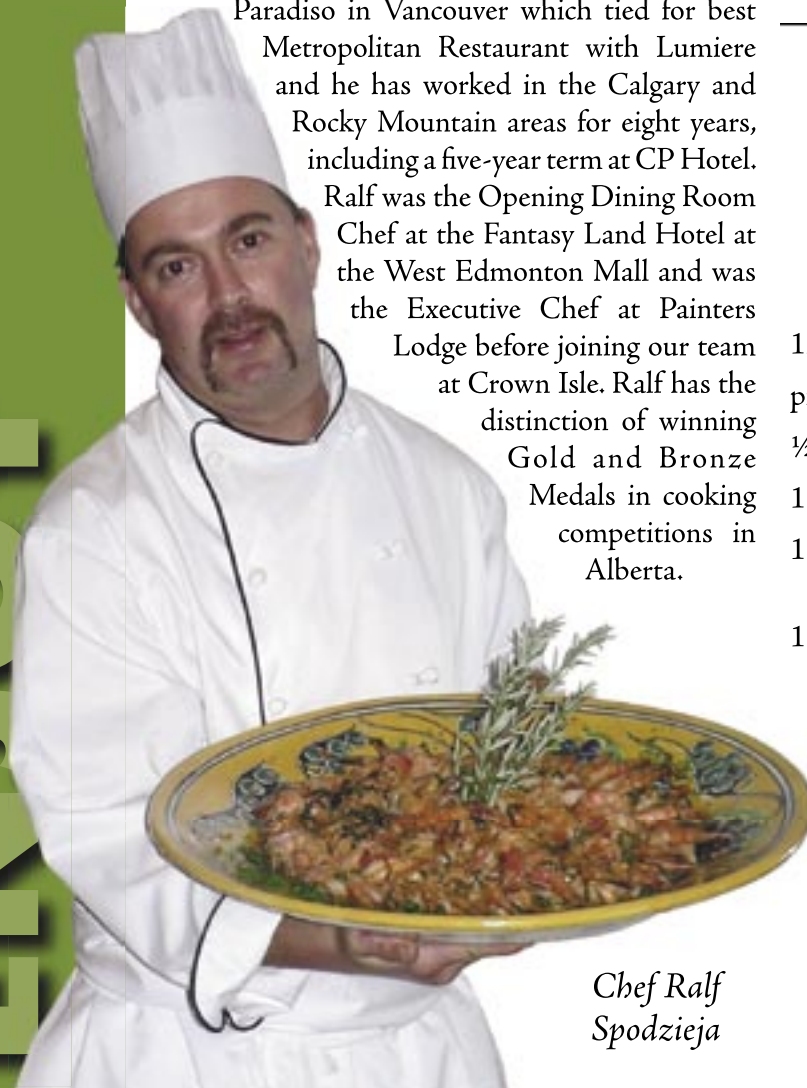
For more information, or to make a reservation please call the Silverado Steakhouse at 703-5050.

Recipe

Knights Inlet Prawns in Honey & Ale

12 prawns shelled	1 tbsp garlic
pinch of cayenne	pinch of salt
½ tsp chili powder	¼ tsp black pepper
1 tbsp olive oil	2 tbsp garlic minced
1 tbsp Worcestershire sauce	2 tbsp honey
1 cup dark ale	2 tsp chopped cilantro
	⅓ cup ice cold cubed unsalted butter

- ~ Heat oil in skillet to a light smoke
- ~ Add garlic and seasonings – brown lightly
- ~ Deglaze with Worcestershire
- ~ Add prawns and toss 1.5 minutes
- ~ Remove prawns and set aside
- ~ Add beer and cilantro, reduce by half
- ~ Add butter stirring constantly
- ~ Reheat prawns in sauce and serve over basmati or brown rice



Chef Ralf Spodzieja

ENJOY



Introducing Golf Superintendent Mike Kearns



Crown Isle Resort and Golf Community, Rated “#1 Golf Course on Vancouver Island” by Golf Digest, welcomes one of Canada’s Top Superintendents – Mike Kearns. Mike comes to

Crown Isle from the Chester Golf Club just outside of Halifax, Nova Scotia and brings with him a wealth of knowledge that has taken him from coast to coast. Mr. Kearns achieved his diploma in Horticulture Technology, Turfgrass Management Certificate in Kwantlen College in Langley, and his Turfgrass Management Certificate at the University of Guelph in Ontario. He is no stranger to the Island as he honed many of his skills as the Assistant Superintendent for eight seasons at the Cordova Bay Golf Club in Victoria. In 2001, Mike was ready for his own Superintendent’s position, which took him to the Maritimes. While on the east coast, Mike was very active with his Golf Club as well as with the Atlantic and Canadian Golf Superintendent’s Association.

“Mike is a dedicated and experienced Golf Professional”, says Jason Andrew, Crown Isle Resort’s Director of Golf. “We are looking forward to him sharing his knowledge, expertise and ideas with us at Crown Isle”.

For the past three seasons, Mike was asked to be a Turfgrass Instructor at Holland College in Charlottetown, PEI. In 2003, he was given the honour of Superintendent of the Year from the Atlantic Superintendent’s Association, which included being nominated by his peers for the 2004 Canadian Superintendent of the Year!

Calendar of Events

Crown Isle Members

July 5th - Ladies’ Field Day

July 15, 16th - Men’s Calcutta

August 13, 14th - Men’s Club Championship

August 20, 21st - Ladies’ Club Championship

October 6th - Ladies’ AGM & Awards Dinner

October 8th - Closing Turkey Classic

October 15th - David Court Memorial
“I Am Canadian Open”

October 19th - Men’s Club AGM & Dinner

December 7th - Ladies’ Christmas Luncheon

End of Month

Mixed Golf & Dinner

May 29th August 28th

June 26th September 18th

July 24th

Men’s Club & Ladies’ Club

Singles and Doubles Match Play

Sign-up sheets for both will be available in the Men’s and Ladies’ Locker Rooms.



PLAY



Welcome from the Men's Club Captain

Spring is here and the golf season is upon us. Our events chairmen have been busy over the winter months planning and preparing for an exciting year of golf. It is our hope that all of you will participate to the fullest extent that you are able and that we can provide venues that are enjoyable. Our goal is to have as many participants for each event and to make your golfing here at Crown Isle not only a great golfing experience but a "fun" one as well. Please contact any of the Men's Club committee members or myself with your comments, concerns or ideas. Our commitment to you is to make your golfing season fun, exciting and challenging. Let's have a great year and "GOOD GOLFING".

Keith Libby, Men's Golf Captain

2005 Men's Club Executive

CAPTAIN - Keith Libby
klibby@shaw.ca 334-8853

PAST CAPTAIN - Lorne Seitz
lseitz@island.net 334-3650

VICE CAPTAIN - Ramsay Poucher - 703-0306

SECRETARY - Glyn Jones
glynj@shaw.ca 334-1762

TREASURER - Bill Verburgt
verbur@shaw.ca 897-3202

AT LARGE - Gary Coleman - 338-5669

MIXED SUNDAYS - Errol Flynn
errolflynn@shaw.ca 898-8880

MEN'S NIGHT - Art Meyers
lindameyers@shaw.ca 339-6906

RULES & HANDICAPS - Duncan Stockwell
dgstockwell@shaw.ca 338-6393

TOURNAMENTS & SPECIAL EVENTS
John Pringle - pringlel@telus.net 339-5452

A note from the Director of Golf

WHAT A START!!!

What happened to winter? With the early start to the season, Bert, Jody and Ron have been fielding many calls regarding Membership for the upcoming season. To date we have twelve (12) new members joining your ranks this spring and judging by the interest around the community, this is just the beginning. Specific details about all the Membership levels are available in the Golf Shop. I encourage everyone to stop and review the various options in the event you may know a friend or family member who is contemplating a Golf Membership.

The Men's & Ladies' Club Committee meetings have started again and the organization for each special event for 2005 is underway.

To add some spice to our month end mixed events, the Men's & Ladies' club reps have added a special theme to each night. All participants will be asked to dress in the appropriate attire and the accompanying dinner will follow the same theme. Our first month end Mixed Golf and Dinner event is May 29th with a Mexican theme - Arribba! Don't forget to sign up for the Match Play - Singles & Doubles. Sign-Up sheets will be posted in both the Men's & Ladies' locker rooms. See you on the course. Until then, keep the ball rolling. ● ● ● ●

*Jason Andrew,
Director of Golf*



Crown Isle Ladies' Club Welcomes Members

Welcome to the Crown Isle Ladies' Club and a new and exciting season of golf!

On "Ladies' Day", each Tuesday, from April through September, your executive will be organizing fun and challenging golf games with enough variety to suit all interests. The sign-up sheet is now available in the ladies locker room and the closing date will be posted on the sheet. The draws will be e-mailed to the participants of each Tuesday's game. We will endeavor to have this information to you no later than Saturday evening. A copy of the draw will also be posted on the bulletin board in the ladies locker room for those who do not have e-mail. For information regarding any Tuesday game, please call the contact numbers noted on the sign-up sheet. To keep everyone well informed, the roster for the season and a calendar of events will be posted for all members in the ladies locker room.

Our Ladies' Club has grown in leaps and bounds over the past few years and over half are regularly playing on Tuesday. For the other half, we would like to extend our invitation to those members that are a bit shy about joining us on Tuesday to give it a try. We have a great time playing golf and the extra activities we are putting together throughout the season are really a lot of fun. The executive is noted on this page, please feel free to call for more information.

*Sharon Walker,
Ladies' Club Captain*



2005 Ladies' Club Executive

CAPTAIN - Sharon Walker
sharonwalker@shaw.ca 338-4340

PAST CAPTAIN - Jean Curry
ijcurry@shaw.ca 334-4780

VICE-CAPTAIN - Sandy Linhart
shlinhard@shaw.ca 334-2683

SECRETARY - Sharon Withey
wittowee@shaw.ca 703-0306

TREASURER - Donna Wilson
cdwilson@telus.net 334-2405

RULES and HANDICAP - Sandy Fairfield
birdielady@shaw.ca 897-0337

INTERCLUB - Dee Horie
pdhorie@shaw.ca 898-8438

PUBLICITY - Sandy Dudley
sandyd@shaw.ca 334-8339

HISTORIAN - Phyllis Stratford
p&kstratford@telus.net 338-6607

SUNSHINE LADY - Margaret Forgeron
MHaughey@mars.ark.com 338-9313

PLAY



Lots of Activity at Crown Isle

The Crown Isle community continues to grow with 22 new lots on Idiens Way, 34 lots on Suffolk Crescent, and 53 lots set amongst the new arrivals of Sussex Drive, Norfolk Way, Cardiff Crescent and Birkshire Boulevard. Only a few sites remain for sale on these new streets.

The summer of '05 will see the extension of Crown Isle Drive and the release of a limited number of beautiful golf course lots.

Residents may notice excavators and trucks working at the end of Crown Isle Drive. We are currently adding site services in preparation of the extension of the Drive. We ask for your continued

patience as we work towards completing this extension. For your safety, we have posted signs asking pedestrians not to walk in this area during construction. We anticipate that the roadwork will be completed within the next several months.

For more information on any real estate inquiries, please contact Errol Winter at our sales office:

Crown Isle: 1-250-703-5050

Toll Free: 1-888-338-8439

Sales Centre: 1-250-703-5054

Website: www.crownisle.com

Email: realestate@crownisle.com



Crown Isle... come for a tee time, stay for a lifetime!

INVEST



“The Estates” at Crown Isle

A new project known as “The Estates at Crown Isle” will be set in between the 14th, 15th and 16th Fairways at our award-winning Crown Isle Golf Course. These new gated executive home sites will enjoy spectacular views of the surrounding mountain ranges. This exclusive residential community will offer only a small selection of estate-size home sites ranging from \$450,000 to \$650,000. Please call Errol Winter at 250-703-5057 for more information.

Somerset Lane

Construction is expected to begin in the next few months for Phase I (twelve units) of a new patio home development, Somerset Lane to be built close to the entrance of the Crown Isle Community. When completed, this new development will include 24 to 28 new patio homes. All of the patio homes will feature the same layout and will be approximately 1,500 sq. ft. in size. For more information on this project please contact Donna Cunliffe or Anna Jorgensen at Coast Realty Group.



Corinthia Estates

Nestled between the 5th and 6th Fairways of the prestigious Crown Isle Golf Course and Resort, these luxuriously appointed condominiums are perfectly situated to enjoy the views of golf course, the Coastal Mountains, the Beaufort Range and of course the legendary Comox Glacier.

Construction is nearing completion for the second building of Corinthia Estates. The third building has also started construction and it is scheduled for completion in November of this year. Phase I (24 units) of this project has been sold out. Only a few units remain for sale in Phase II and Phase III. This project is located at the end of Royal Vista Way in Crown Isle and will include underground parking. The realtor for this project is Donna Cunliffe from Coast Realty Group, at 1-250-897-3999 or:

Toll Free: 1-800-715-3999

Email: donna@corinthiaestates.com

Website address: www.corinthiaestates.com



INVEST



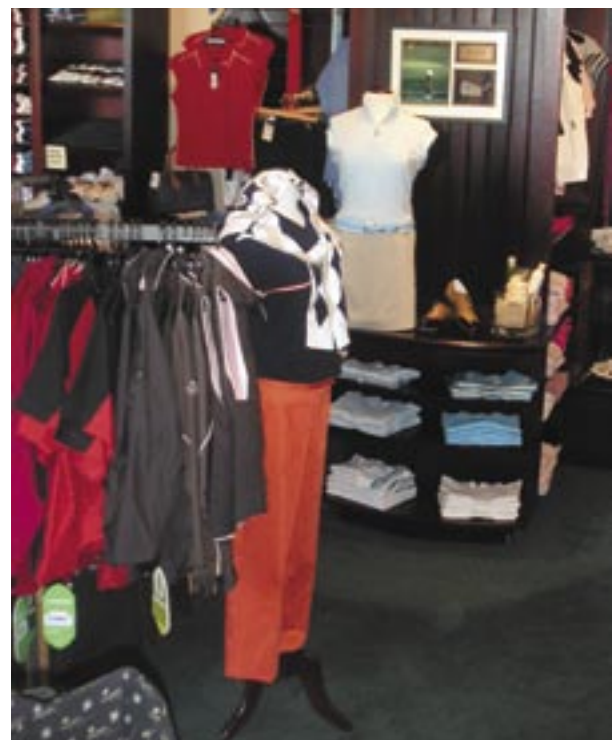
Tee Off in Style at the Crown Isle Golf Shop

The Golf Shop is alive with new colours this season. Vibrant greens, pinks, oranges and browns highlight the displays throughout the Shop. New this season is an assortment of ladies' wear from Cross and the new technical fabric "Clima Cool" tops from Adidas in various colours for both men and women.

Of course we still carry a full assortment of outer wear from Sun Ice, with new styles and fabrics in the new bright new colours. Past favorites of tops and pants by Mexx Sport casual wear are featured in fresh new colours. We also carry a wide selection of men's and ladies' golf shirts from Aurea, Aureus and Ashworth in the new greens, oranges and browns that are a big hit this season. Yes, we still carry the full button short sleeve silk men's shirts by Cotton Reel in colours that make a statement and will be distinctive for any

occasion. A wide variety of kids golf wear from Krickets Golf will outfit the junior golfer in the family.

New for this season, are the Foot Joy Sport style golf shoes. Combine total comfort with ultimate style while you walk around the course. We invite you to come in and try the new Ping G2 golf clubs, voted the # 1 Club for 2005 by Golf Digest, at our exclusive Ping Club Fitting Centre. We hope to see you soon, please call us directly at 703-5031 if we can be of further assistance.



RELAX